

ADELPHIA COMMUNICATIONS CORP.

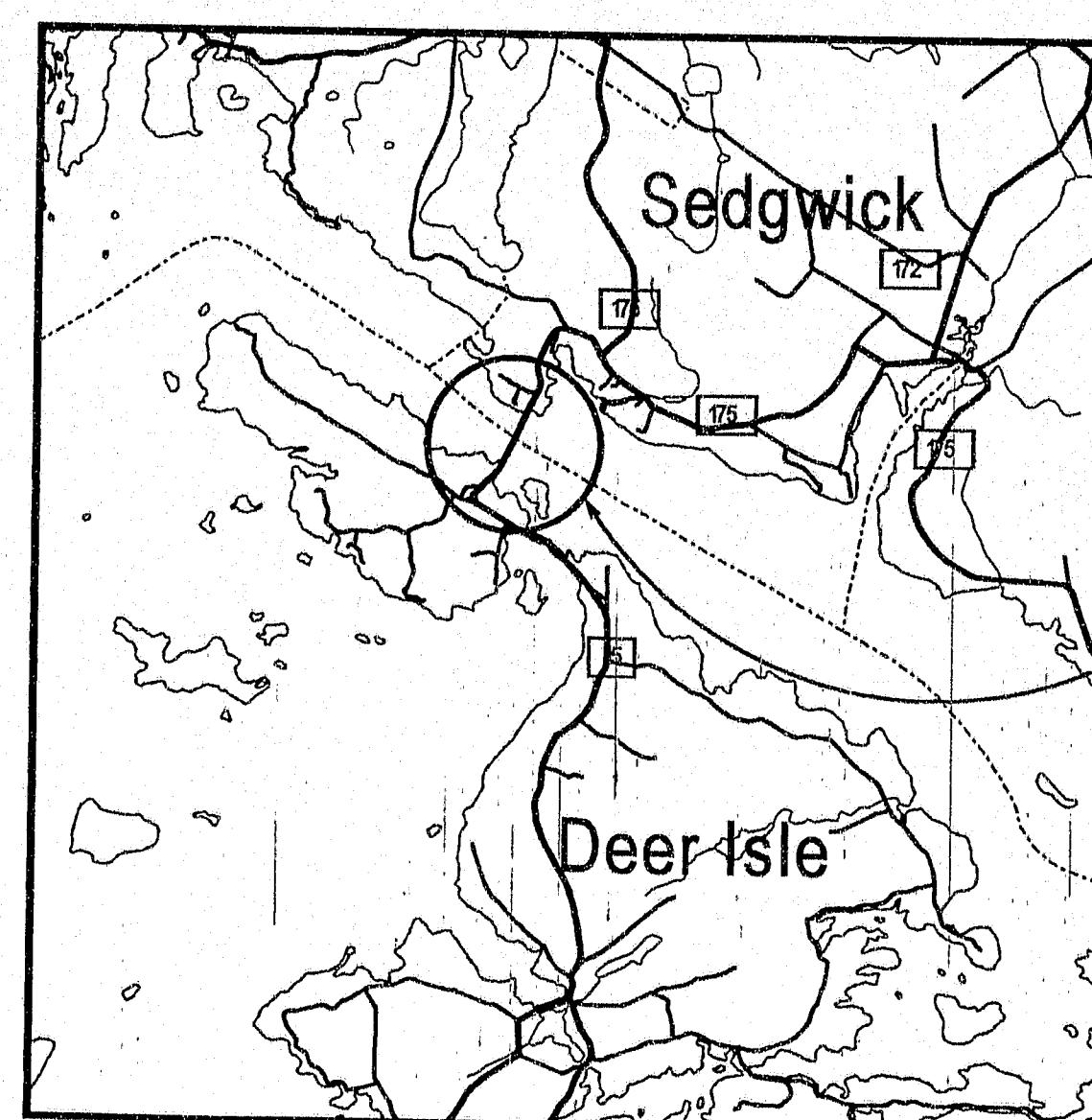


DEER ISLE BRIDGE CROSSING DEER ISLE / SEDGWICK OVER EGGEMOGGIN REACH STATE ROUTE 15

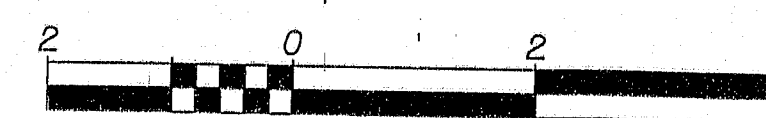
PROJECT NO. 53252

PROJECT LENGTH 0.000 mi

MAINE DOT BRIDGE NO. 3257



LOCATION MAP



Scale in Miles

SPECIFICATIONS

DESIGN: AASHTO LRFD Bridge Design Specifications, Second Edition 1998 and Interim Specifications 1999.

MATERIALS

Structural Steel: ASTM A36
High Strength Bolts ASTM A 325M, Type 3

BASIC DESIGN STRESSES

Structural Steel:
ASTM A36 $F_y = 36,000$ psi
ASTM A 325M $F_u = 120,000$ psi

MAINTENANCE OF TRAFFIC

Maintain one 10 foot wide lane of alternating two - way traffic using flaggers in accordance with the traffic control plan (TCP).

LIST OF DRAWINGS

Title Sheet	1
Quantities, Notes & Typicals	2
General Plan	3
Sedgwick Anchorage	4
Approach Span to Suspended Span Details	5
Deer Isle Anchorage	6
Deer Isle Abutment	7
Traffic Control Plan	8

REVISIONS	
NO.	DESCRIPTION

PROJECT NO.	53252.000
DATE	6/25/04
DESIGNED BY	K. WOOD
DRAWN BY	D. SHAW
CHECKED BY	P. HETHERLY

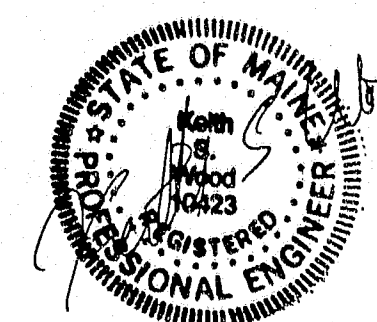
Gurtn Elberton & Associates, Inc.
Engineers & Scientists
331 State Street, Augusta, Maine 04330
Tel: 207-623-0046 Fax: 207-623-0488
www.gurtn.com

ADELPHIA CABLE CROSSING
- DEER ISLE - SEDGWICK BRIDGE
OVER EGGEMOGGIN REACH

TITLE SHEET

SHEET NUMBER
1
OF 8

131-145



Date: 6/25/04

Username: User3

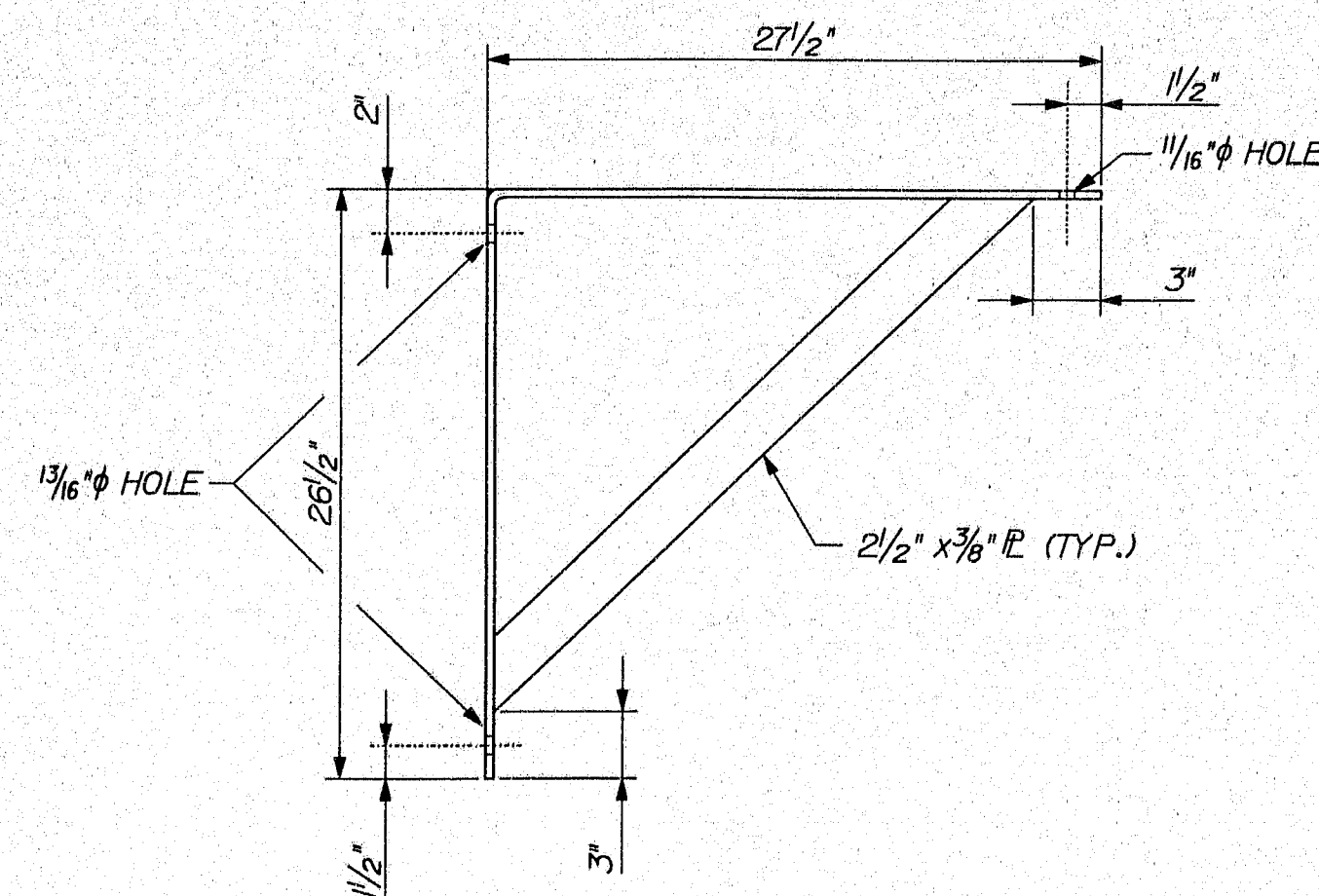
Division: \$wkgroup3

Filename: \$file3

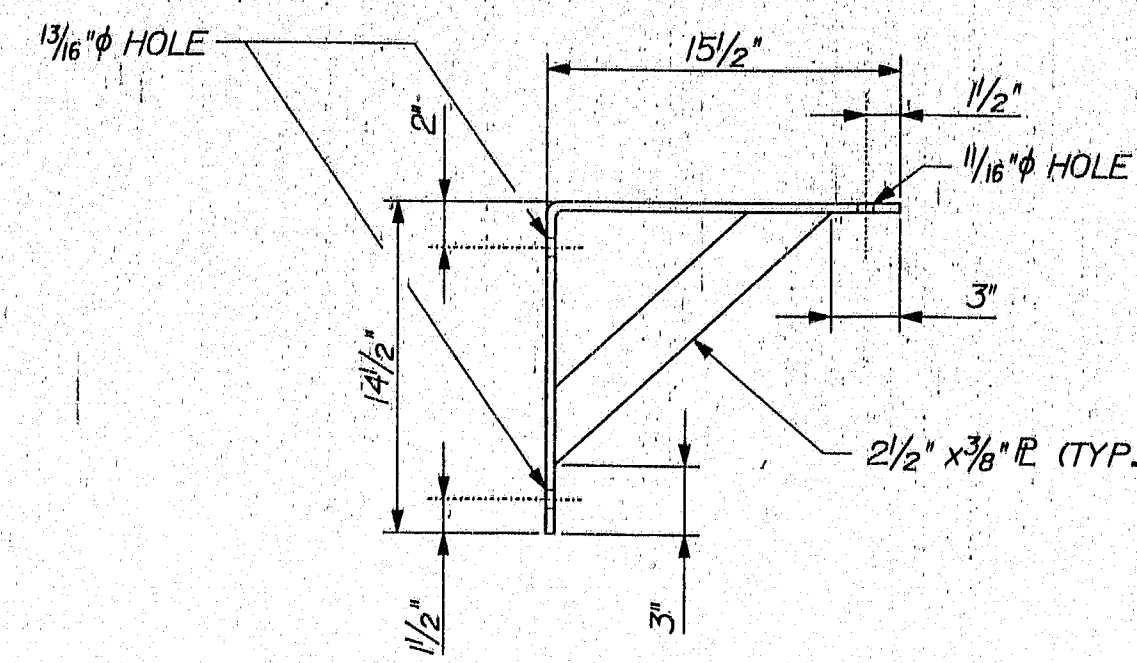
ESTIMATED QUANTITIES			
ITEM NO.	DESCRIPTION	QUANTITY	UNIT
1	12" OFFSET BRACKET	59	EA.
2	24" OFFSET BRACKET	4	EA.
3	4" STEEL YOKE / PIPE ROLL	63	EA.
4	2" STEEL YOKE / PIPE ROLL	113	EA.
5	TOP FLANGE C-CLAMP	113	EA.
6	4" PVC EXPANSION JOINTS - 6" EXPANSION	3	EA.

NOTES

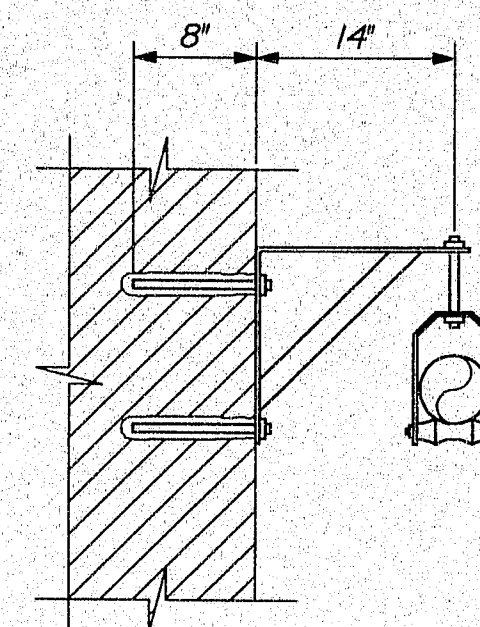
- Bolts for attachment of brackets to girder shall be $\frac{3}{4}$ " with $\frac{1}{16}$ " holes.
- All bracket and bolt material in contact with the structure shall be hot dipped galvanized.
- Maximum spacing of brackets/beam clamps is as follows:
 - Approach spans - 10 ft
 - Suspended spans within fairing - 20 ft
- Brackets shall be oriented plumb to a vertical line and should not be located within 4" of any vertical stiffener or splice plate.
- Conduit on the bridge shall be as follows:
 - Approach spans - Schedule 80 PVC
 - Suspended spans within fairing - 2" inner duct - SDR 13.5
- Adelphia is responsible for acquiring any and all applicable permits beyond the utility permit required by Maine DOT.
- A permanent tag shall be affixed to each end of the conduit identifying the owner of the conduit, the type of attachment, and a telephone contact number. All tags shall be maintained in a legible condition with current information.
- The communication line shall be installed in accordance with all applicable national standards.
- Where holes are cut in the grating at the ends of the fairing, the gratings shall be framed to prevent damage to the grating and the conduit.
- 1 - 2" steel yoke hanger shall be placed a minimum of 6" from each location where the 2" conduit passes through the grating at the ends of the fairing.
- 1 - 4" PVC expansion joint capable of 6" of expansion shall be placed on each set of approach spans (2 ~ 65' spans), in accordance with the manufacturer's specifications.
- Anchoring material for anchor bolts shall be one of the products listed on the Maine DOT list of prequalified Type 2 anchoring materials. Installation shall be in accordance with the manufacturer's recommendations.
- Anchor bolts for anchorage into concrete shall be $\frac{3}{4}$ ", and shall be capable of developing a minimum unconfined pullout strength in 3000 psi concrete of 10 tons. The minimum embedment depth is 8 inches. Spacing of anchor bolts shall match the bolt pattern for the applicable hanger.
- Contractor shall accurately locate the existing rebar within the anchorages so as not to drill through the existing rebar during the installation of the concrete anchors.
- All welding shall be in accordance with AASHTO/AWS D1.5.



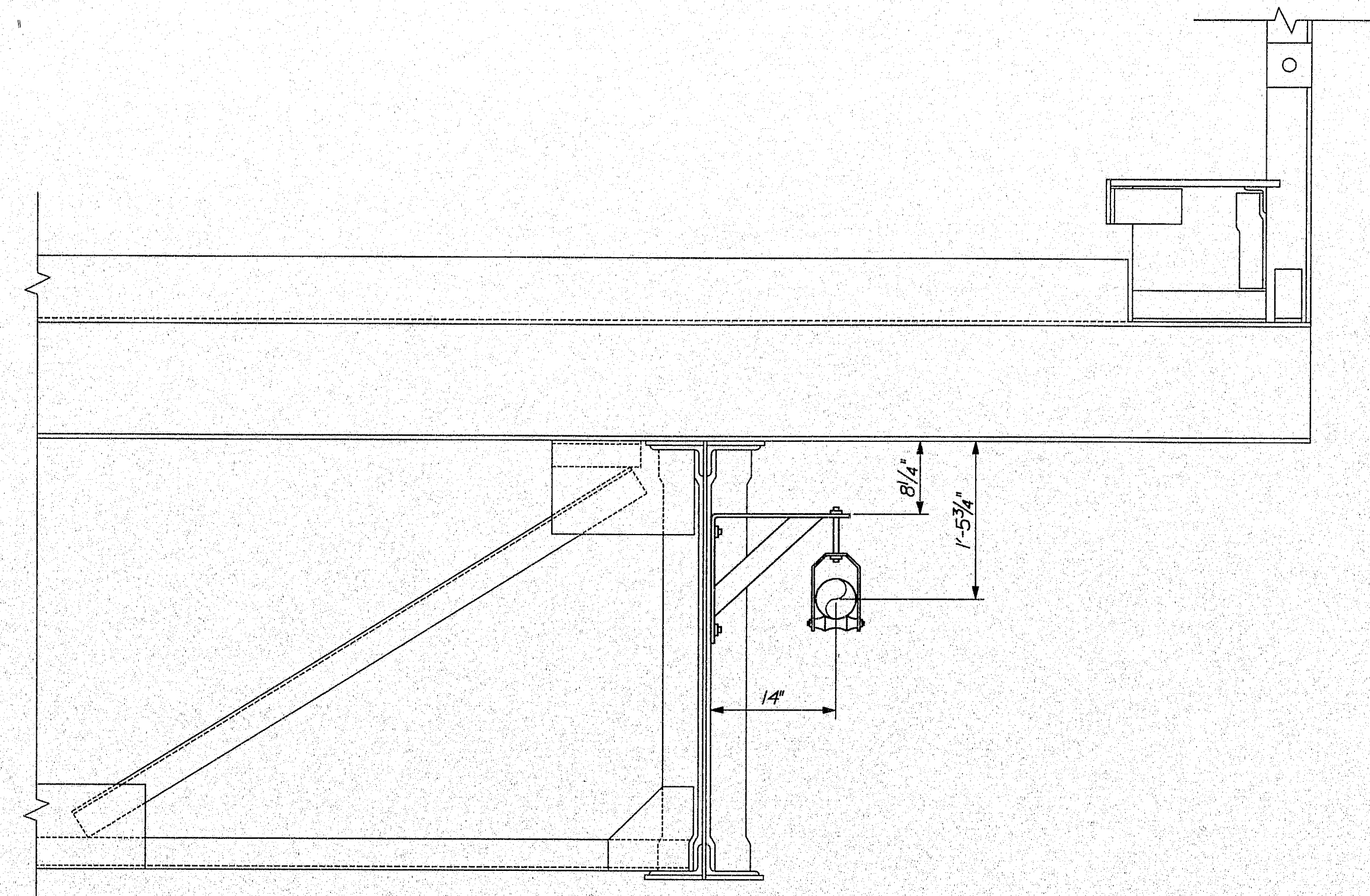
24" OFFSET BRACKET



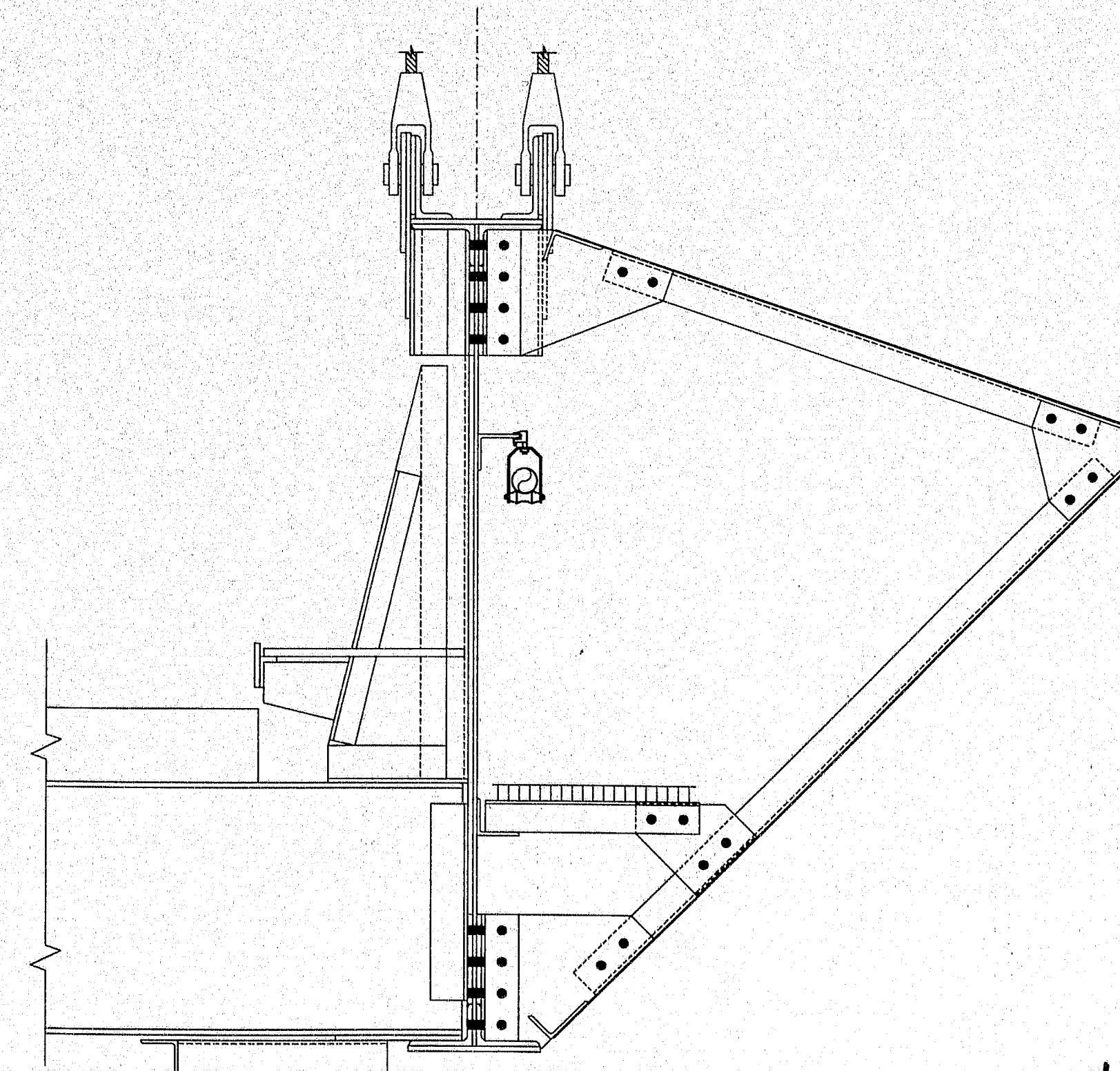
12" OFFSET BRACKET



SECTION AT ABUTMENT / ANCHORAGE



CROSS SECTION (APPROACH SPANS)



CROSS SECTION AT FAIRING

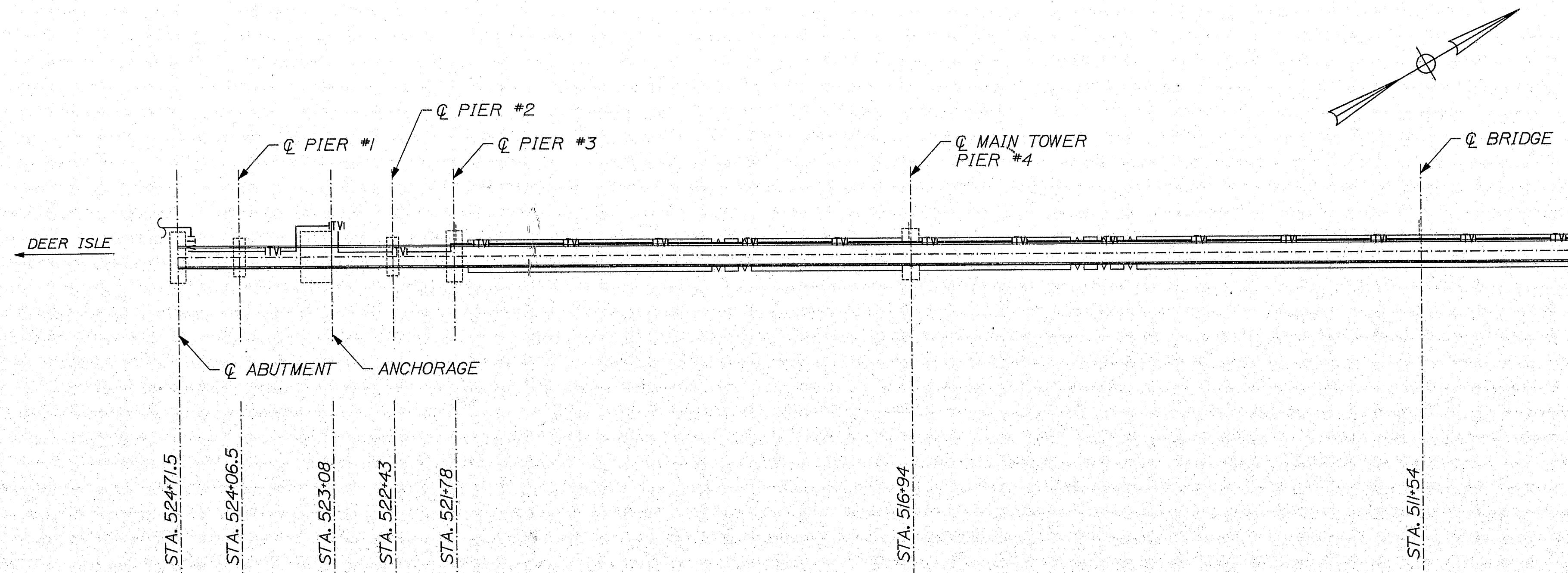
SHEET NUMBER		ADDELPHIA CABLE CROSSING		PROJECT NO. 53252.000		REVISIONS	
2 OF 8		DEER ISLE - SEDGWICK BRIDGE =OVER EGGE MOGGIN REACH		DATE		NO.	
				6/29/04		1	
				DESIGNED BY		2	
				K. FLOOD		3	
				DRAWN BY		4	
QUANTITIES, NOTES AND TYPICALS		GUARDIAN ELLERTON & ASSOCIATES, INC. Engineers & Scientists 337 Shaw Street, Augusta, Maine 04330 Tel. 207-623-0546 Fax. 207-623-0480 www.gela-inc.us		CHECKED BY		5	
				D. SHAW		6	
				P. LUTHER Y		7	

Date: 06/29/2004

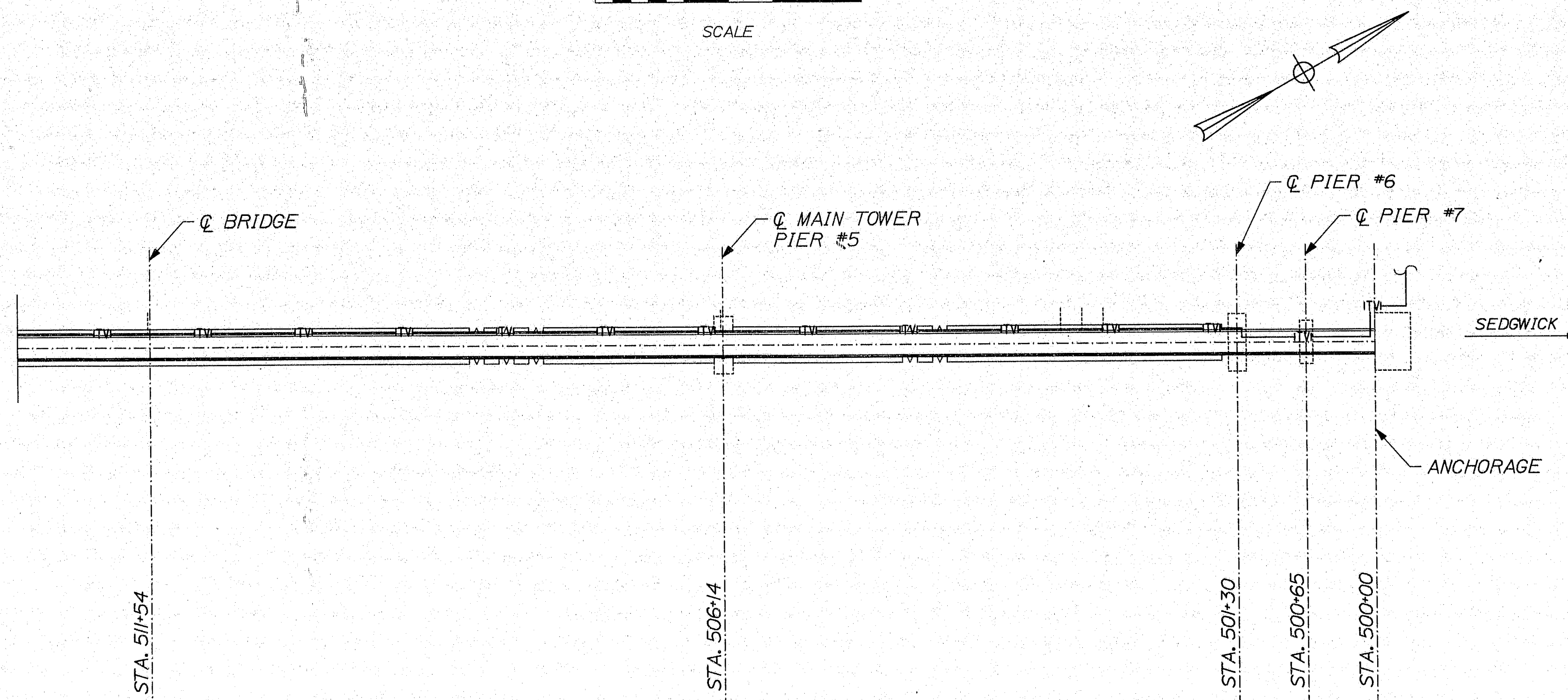
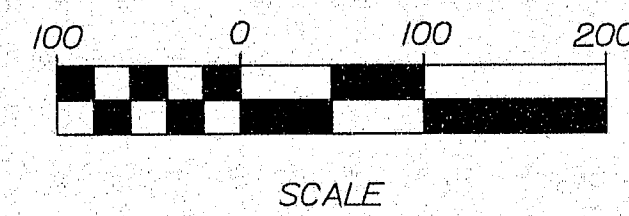
Username: dshaw

Division: BRIDGE

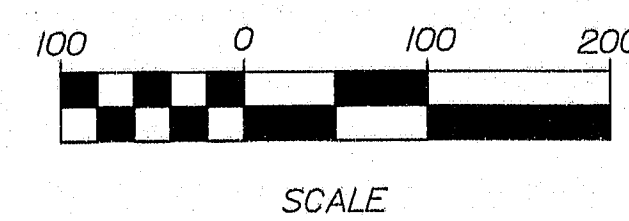
Filename: ...\\000\\BRIDGE\\MSTA\\003_Plan.dgn



PLAN



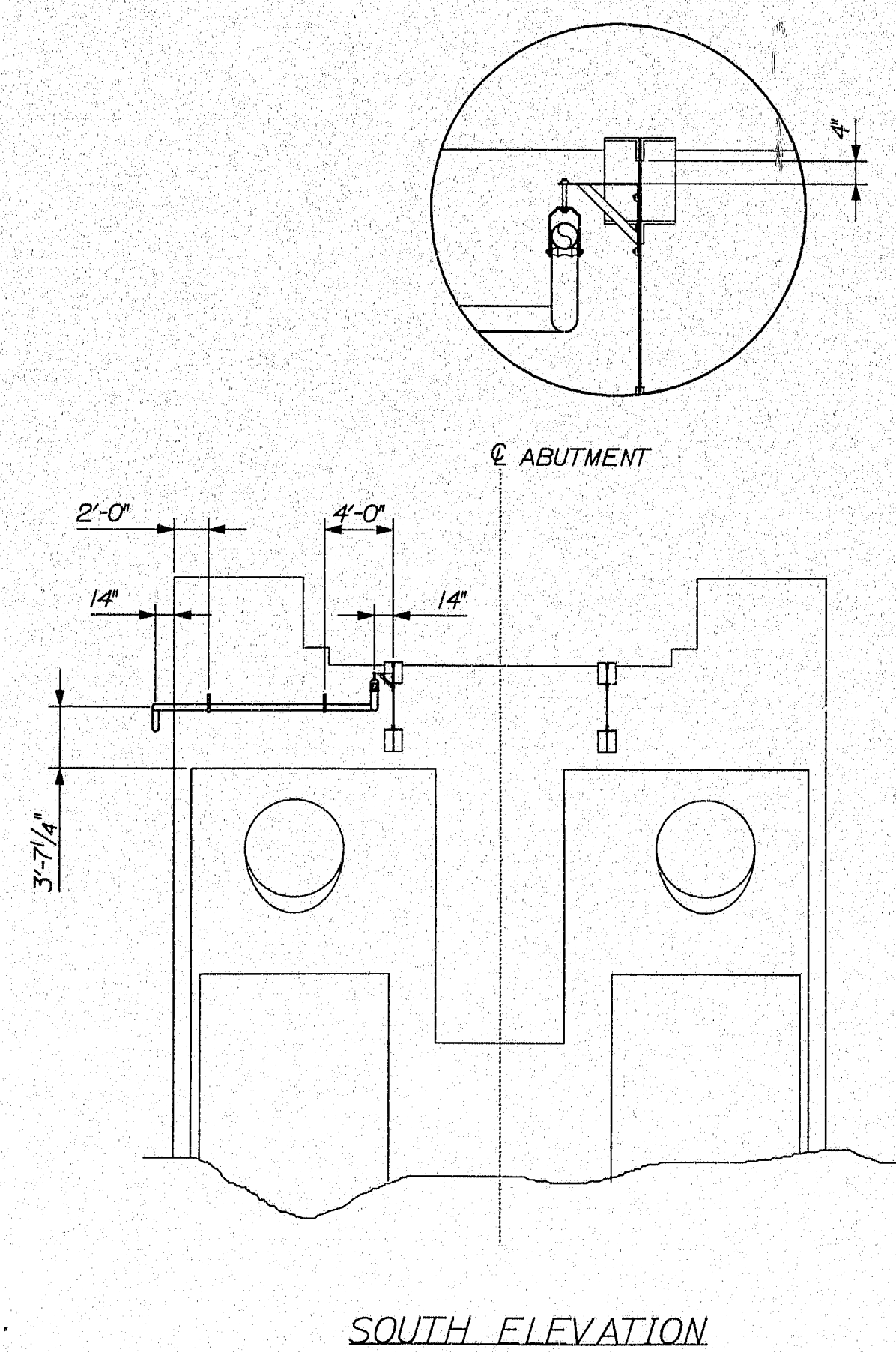
PLAN



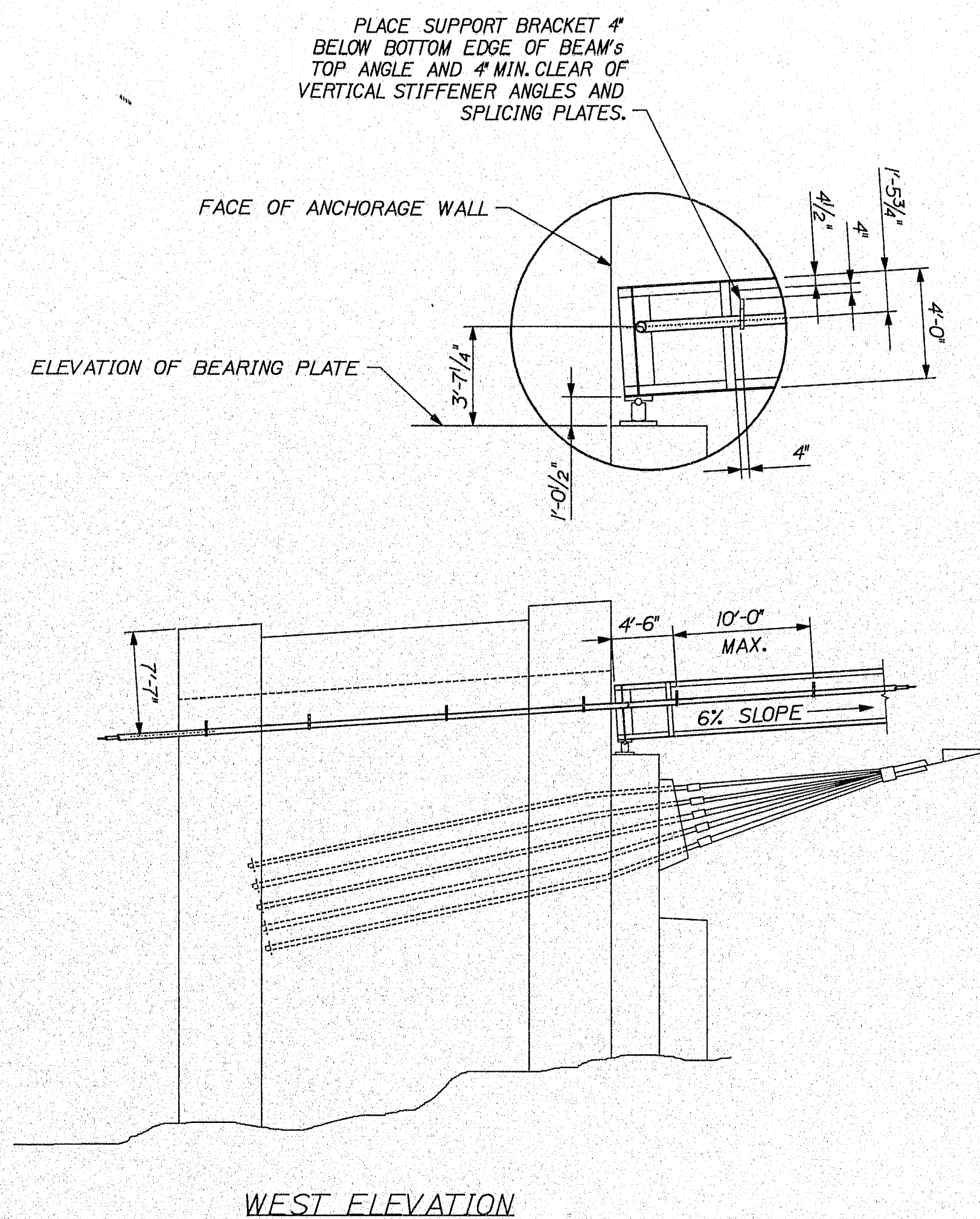
131-147

ADELPHIA CABLE CROSSING		REVISIONS	
DEER ISLE - SEDGWICK BRIDGE OVER EGEMOGGIN REACH		NO.	DATE
		1	6/29/04
		2	7/1/04
		3	7/1/04
		4	7/1/04
PROJECT NO. 53252.000 DATE 6/29/04 DESIGNED BY K. WOOD DRAWN BY D. SHAW CHECKED BY P. HETHERLY		SHEET NUMBER	
		3 OF 8	

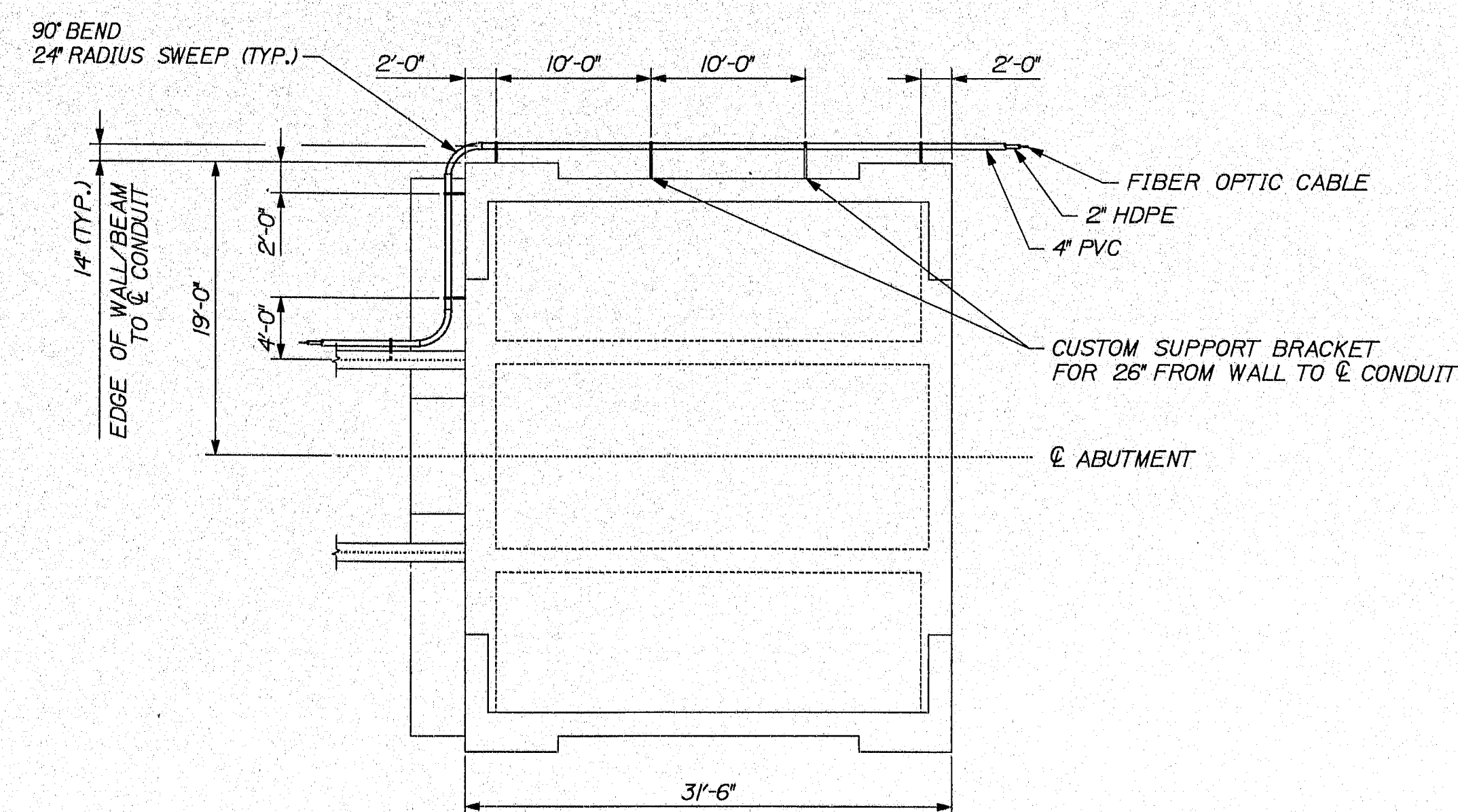
Guertin Elkerton & Associates, Inc.
Engineers & Scientists
331 State Street, Augusta, Maine 04330
Tel: 207-623-0648 Fax: 207-623-0488
www.gea-inc.com




SOUTH ELEVATION

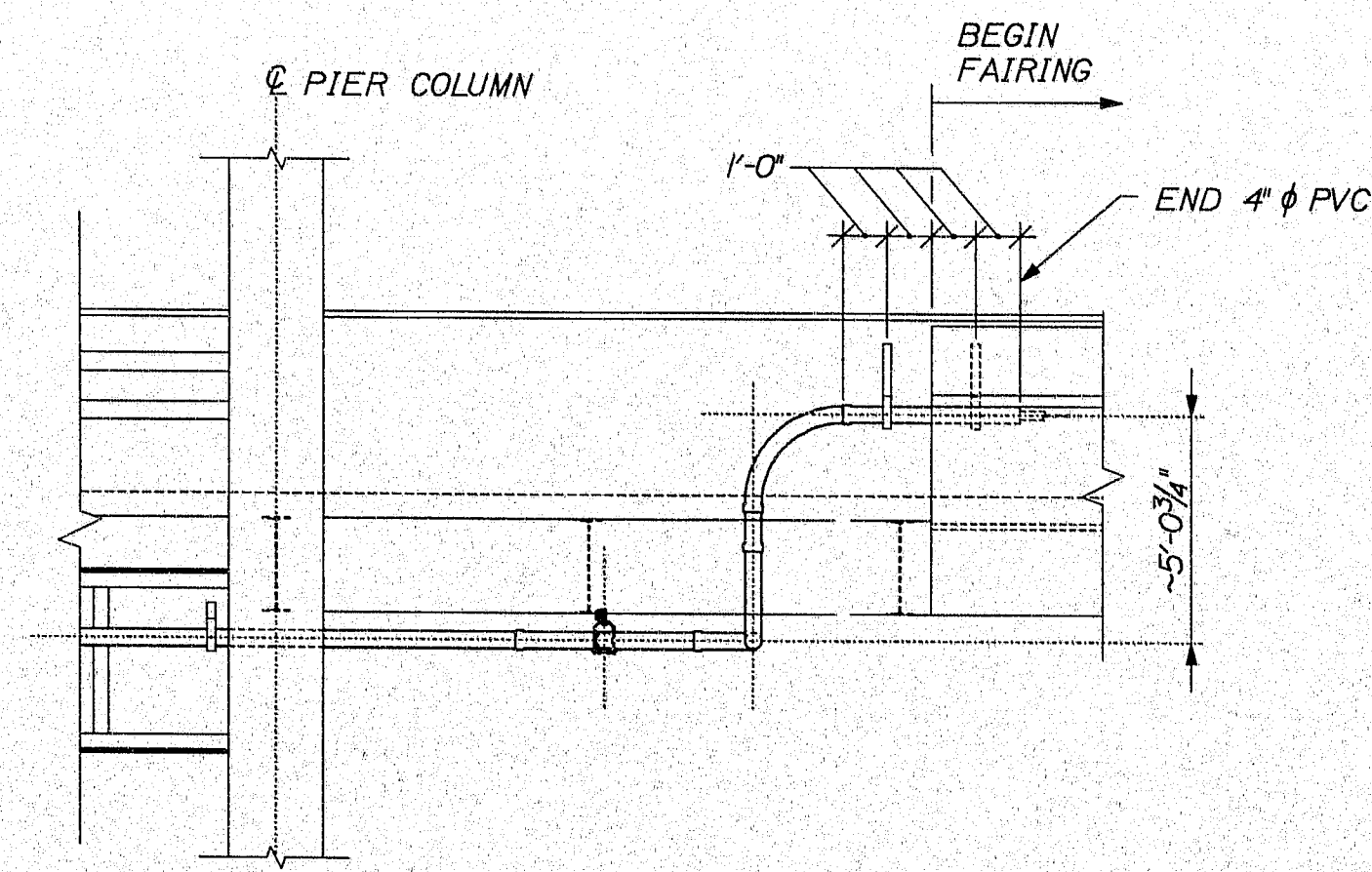


WEST ELEVATION

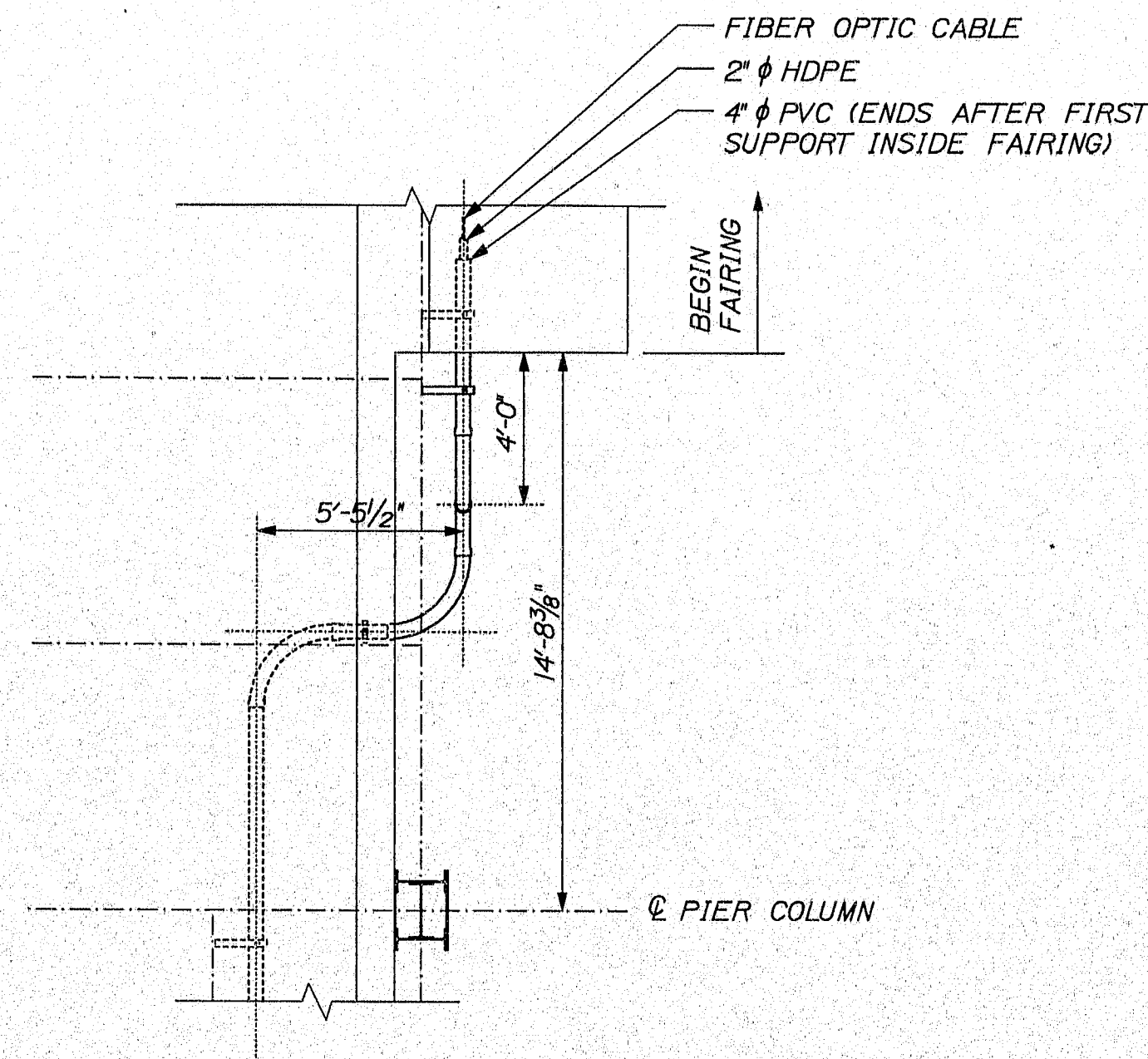


SEDGWICK ANCHORAGE PLAN

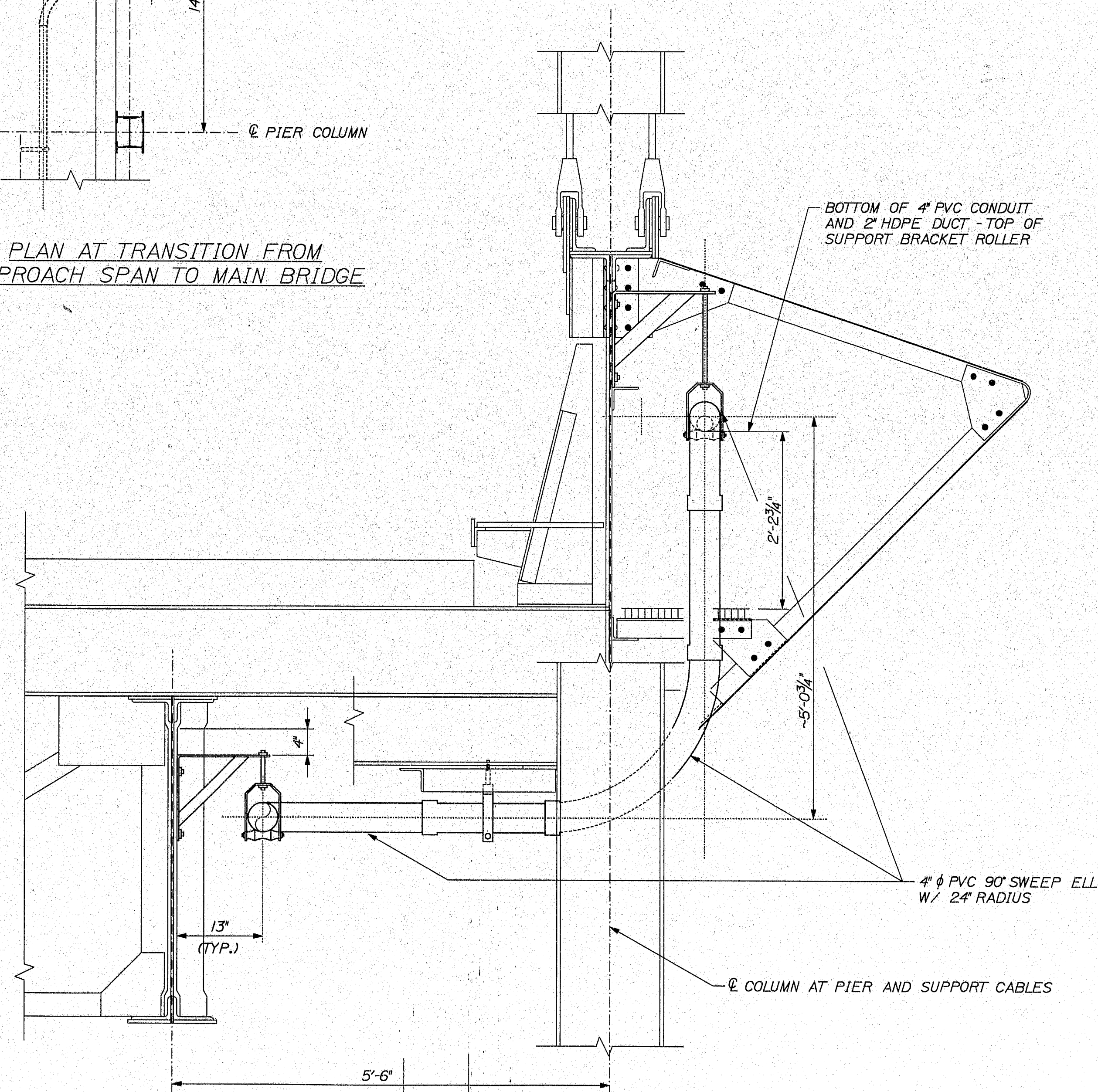
SHEET NUMBER	ADELPHIA CABLE CROSSING	<div><p>Guertin Ellerton & Associates, Inc. Engineers & Scientists</p><p>331 Old Derby Road, Suite 200 Tel: 207-533-9548 Fax: 207-523-0489 www.gfainc.us</p></div>	PROJECT NO.	REVISIONS		
			DATE	NO.	DATE	DESCRIPTION
			6/29/04	△		
			DESIGNED BY K. WOOD	△		
			DRAWN BY D. SHAW	△		
			CHECKED BY P. HETHERLY			



ELEVATION AT TRANSITION FROM
APPROACH SPAN TO MAIN BRIDGE



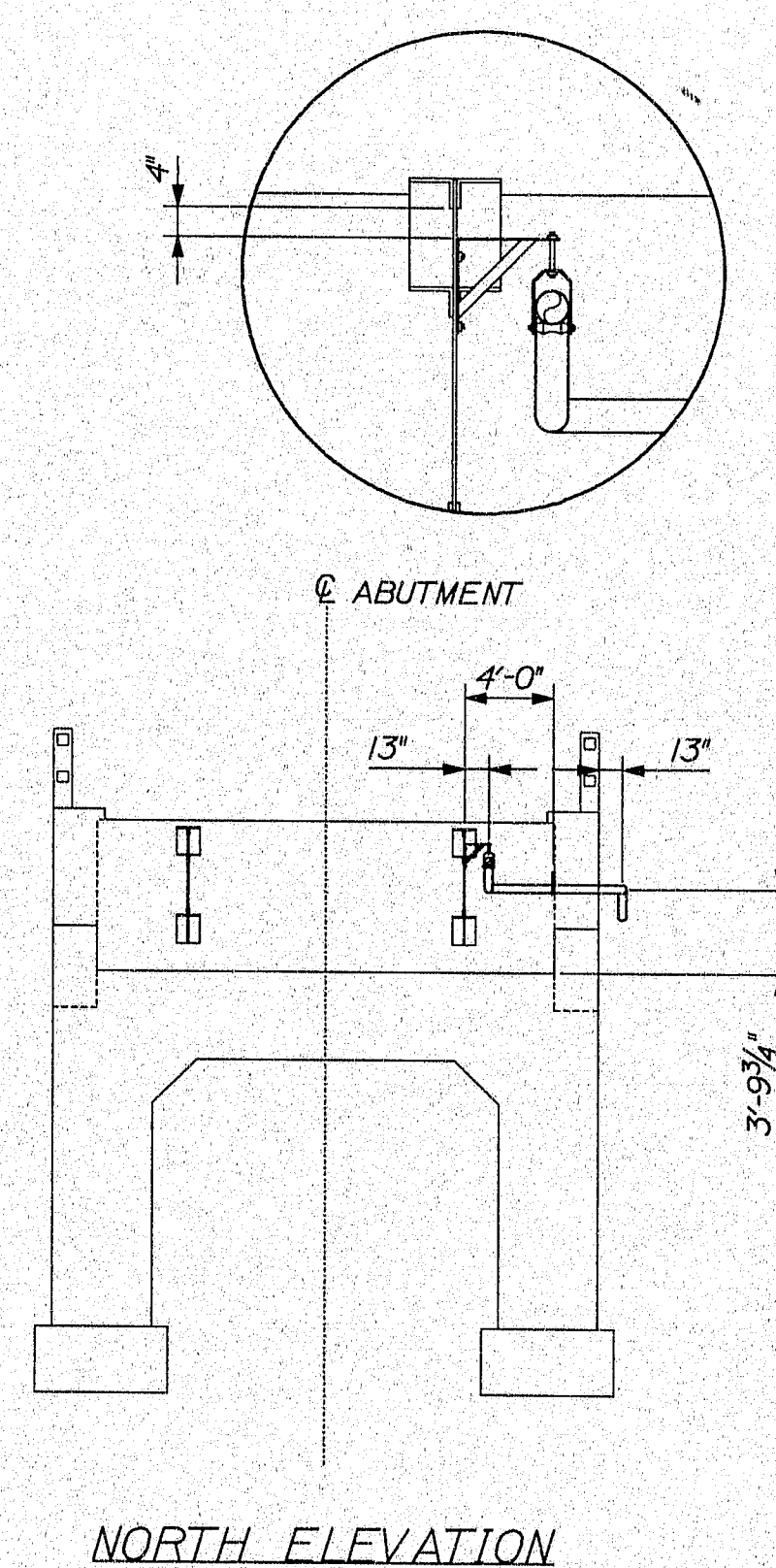
PLAN AT TRANSITION FROM
APPROACH SPAN TO MAIN BRIDGE



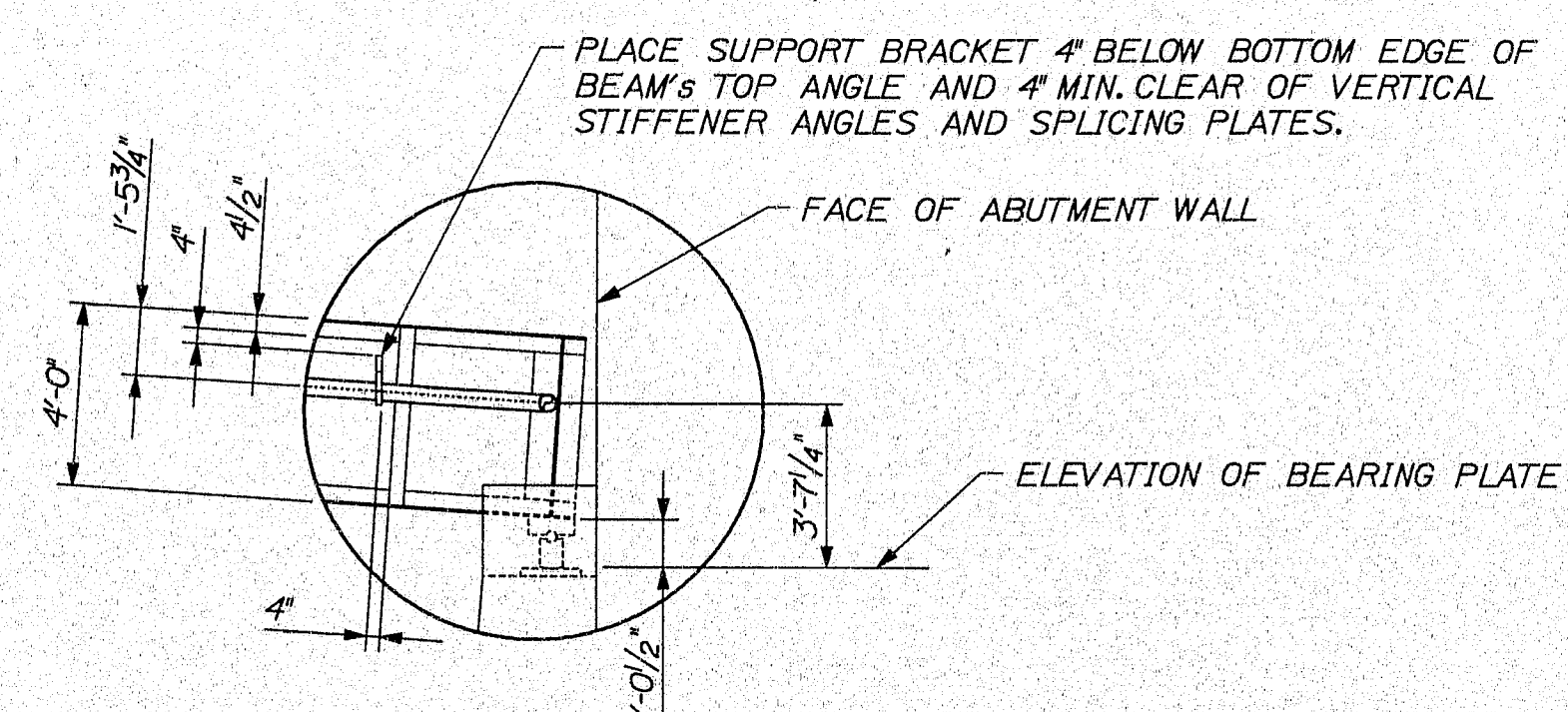
CROSS SECTION AT TRANSITION FROM
APPROACH SPAN TO MAIN BRIDGE

131-149

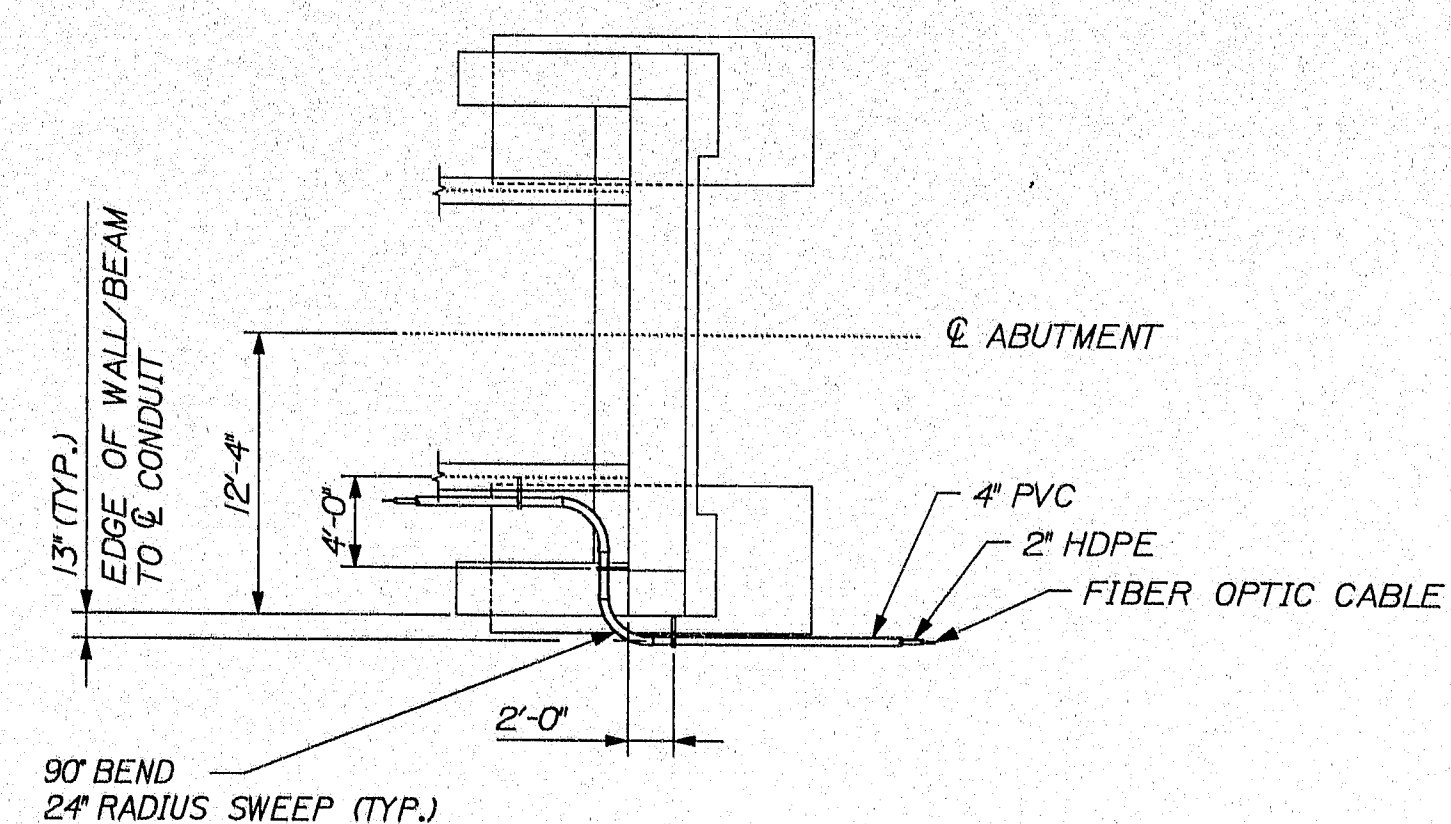
SHEET NUMBER		ADDELPHIA CABLE CROSSING		PROJECT NO. 53252.000		REVISIONS		
5 OF 8	DEER ISLE - SEDGWICK BRIDGE OVER EGGEMOGGIN REACH		<div></div> <div>Guertin Ellerton & Associates, Inc. Engineers & Scientists 331 State Street, Augusta, Maine 04330 Tel: 207-425-0448 Fax: 207-425-0486 www.gea-inc.us</div>		DATE	NO.	DATE	DESCRIPTION
					DESIGNED BY	NO.		
					DRAWN BY	NO.		
					CHECKED BY	NO.		
	APPROACH SPAN TO SUSPENDED SPAN DETAILS							



NORTH ELEVATION



WEST ELEVATION



DEER ISLE ABUTMENT PLAN

PROJECT NO.		REVISIONS	
53252.000		NO.	DESCRIPTION
DATE		DATE	
6/29/04		DATE	
DESIGNED BY		DATE	
J. WOOD		DATE	
DRAWN BY		DATE	
D. SHAW		DATE	
CHECKED BY		DATE	
P. HETHERLY		DATE	

ADELPHIA CABLE CROSSING

DEER ISLE - SEDGWICK BRIDGE
OVER EGGMOGGIN REACH

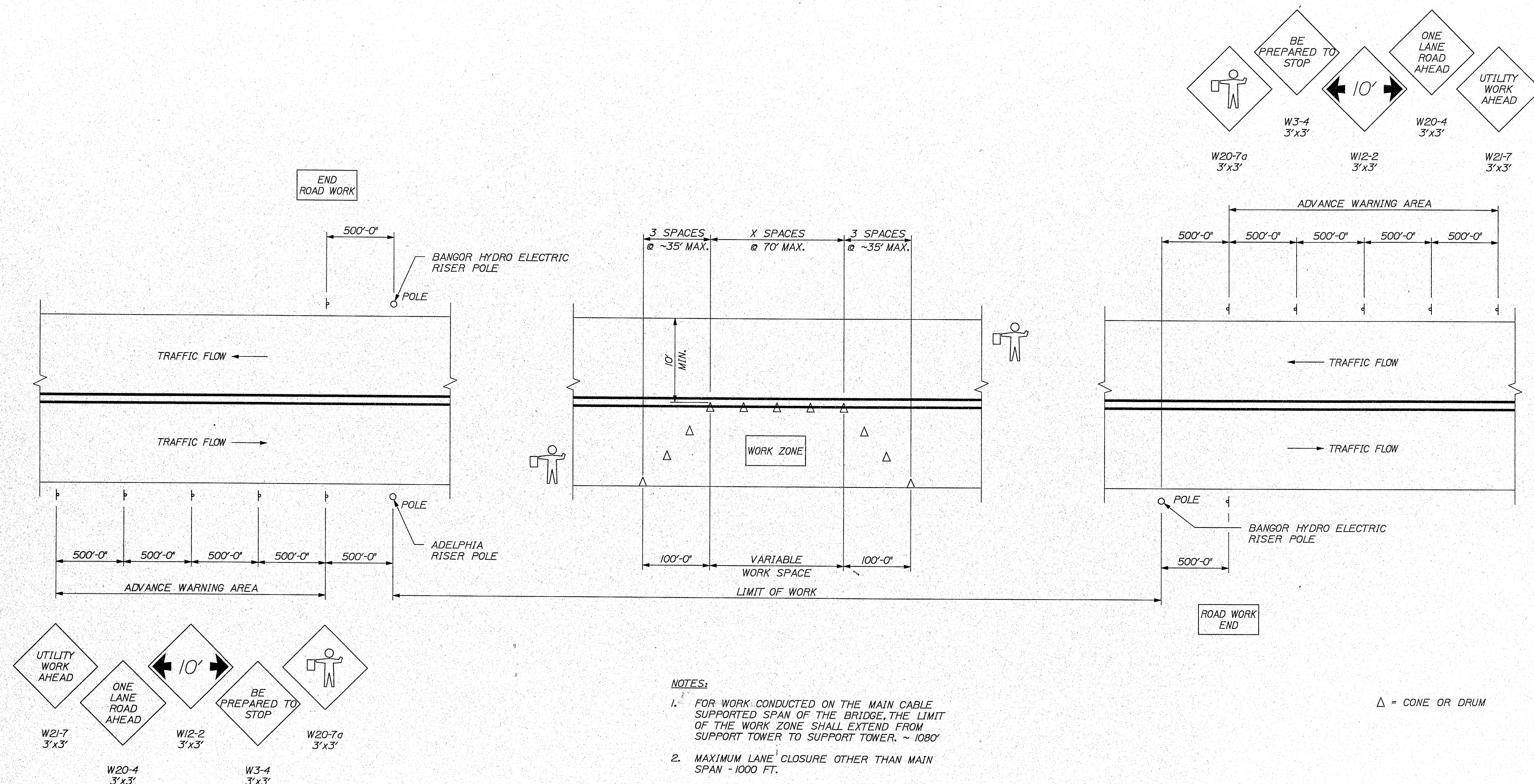
DEER ISLE ABUTMENT

SHEET NUMBER

7

OF 8

131-151



REVISIONS			
NO.	DATE	DESCRIPTION	
1	6/29/04		
2			
3			
4			
5			
6			
7			
8			
9			
10			
11			
12			
13			
14			
15			
16			
17			
18			
19			
20			
21			
22			
23			
24			
25			
26			
27			
28			
29			
30			
31			
32			
33			
34			
35			
36			
37			
38			
39			
40			
41			
42			
43			
44			
45			
46			
47			
48			
49			
50			
51			
52			
53			
54			
55			
56			
57			
58			
59			
60			
61			
62			
63			
64			
65			
66			
67			
68			
69			
70			
71			
72			
73			
74			
75			
76			
77			
78			
79			
80			
81			
82			
83			
84			
85			
86			
87			
88			
89			
90			
91			
92			
93			
94			
95			
96			
97			
98			
99			
100			
101			
102			
103			
104			
105			
106			
107			
108			
109			
110			
111			
112			
113			
114			
115			
116			
117			
118			
119			
120			
121			
122			
123			
124			
125			
126			
127			
128			
129			
130			
131			
132			
133			
134			
135			
136			
137			
138			
139			
140			
141			
142			
143			
144			
145			
146			
147			
148			
149			
150			
151			
152			
153			
154			
155			
156			
157			
158			
159			
160			
161			
162			
163			
164			
165			
166			
167			
168			
169			
170			
171			
172			
173			
174			
175			
176			
177			
178			
179			
180			
181			
182			
183			
184			
185			
186			
187			
188			
189			
190			
191			
192			
193			
194			
195			
196			
197			
198			
199			
200			
201			
202			
203			
204			
205			
206			
207			
208			
209			
210			
211			
212			
213			
214			
215			
216			
217			
218			
219			
220			
221			
222			
223			
224			
225			
226			
227			
228			
229			
230			
231			
232			
233			
234			
235			
236			
237			
238			
239			
240			
241			
242			
243			
244			
245			
246			
247			
248			
249			
250			
251			
252			
253			
254			
255			
256			
257			
258			
259			
260			
261			
262			
263			
264			
265			
266			
267			
268			
269			
270			
271			
272			
273			
274			
275			
276			
277			
278			
279			
280			
281			
282			
283			
284			
285			
286			
287			
288			
289			
290			
291			
292			
293			
294			
295			
296			
297			
298			
299			
300			
301			
302			
303			
304			
305			
306			
307			
308			
309			
310			
311			
312			
313			
314			
315			
316			
317			
318			
319			
320			
321			
322			
323			
324			
325			
326			
327			
328			
329			
330			
331			
332			
333			
334			
335			
336			
337			
338			
339			
340			
341			
342			
343			
344			
345			
346			
347			
348			
349			
350			
351			
352			
353			
354			
355			
356			
357			
358			
359			
360			
361			
362			
363			
364			
365			
366			
367			
368			
369			
370			
371			
372			
373			
374			
375			
376			
377			
378			
379			
380			
381			
382			
383			
384			
385			
386			
387			
388			
389			
390			
391			
392			
393			
394			
395			
396			
397			
398			
399			
400			
401			
402			
403			
404			
405			
406			
407			
408			
409			
410			
411			
412			
413			
414			
415			
416			
417			
418			
419			
420			
421			
422			
423			
424			
425			
426			
427			
428			
429			
430			
431			
432			
433			
434			
435			
436			
437			
438			
439			
440			
441			
442			
443			
444			
445			
446			
447			
448			
449			
450			
451			
452			
453			
454			
455			
456			
457			
458			
459			
460			
461			
462			